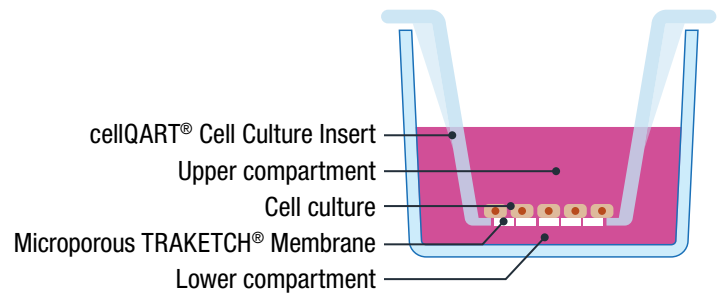


## cellQART® Cell Culture Inserts



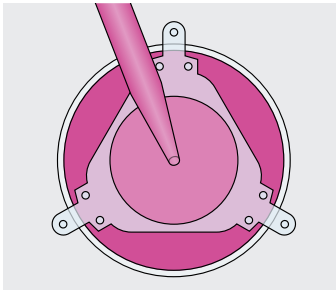
### cellQART® 장점

- ▶ C사, B사에 OEM되는 Cell Culture Inserts를 저렴하게 이용.
- ▶ 대부분의 Cell Culture Plates에 호환.
- ▶ 독창적인 디자인으로 inserts 와 세포 사이의 위킹 방지.
- ▶ 하부 구획에서 세포 손상 되지 않은 공동 co-culturing.
- ▶ 하부 구획 접근 허용.

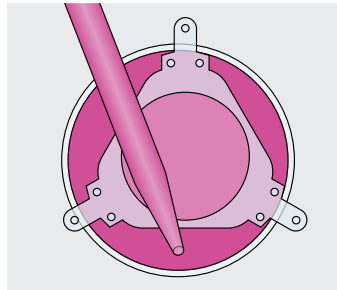


### Pipette 위치 및 공기 순환

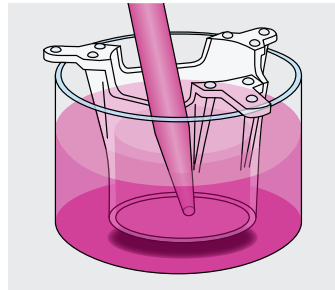
Wide window of cellQART® Cell Culture Insert for comfortable pipetting access.



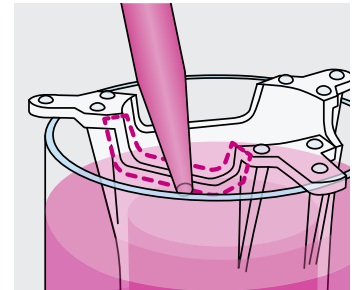
Asymmetric positioning of cellQART® Cell Culture Inserts...



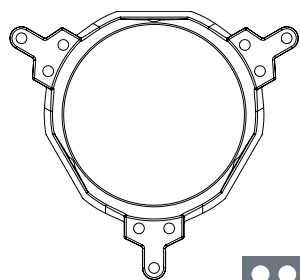
... for comfortable pipetting access to the cultivation vessel.



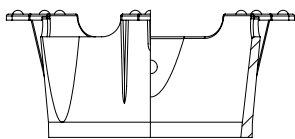
Lowered top edge for better pipetting access to the cultivation vessel.



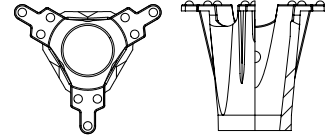
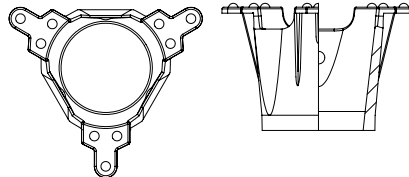
# cellQART® Cell Culture Inserts



6-Well Insert /  
6 pieces per Well Plate



12-Well Insert /  
12 pieces per Well Plate



24-Well Insert /  
24 pieces per Well Plate



1:1 original cellQART® Cell Culture Insert dimensions

## Portfolio

	Picture	Quantity per Well Plate	Growth area	Membrane optics	Pore size	Pore density per cm <sup>2</sup>	Item number	Quantity per box
6-Well Insert PET		6 pcs.	4.5 cm <sup>2</sup>	○ Translucent	0.4 μm	100 × 10 <sup>6</sup>	930 04 02	48 pcs.
					1.0 μm	2 × 10 <sup>6</sup>	930 10 02	
					3.0 μm	2 × 10 <sup>6</sup>	930 30 02	
					5.0 μm	0.6 × 10 <sup>6</sup>	930 50 02	
					8.0 μm	0.2 × 10 <sup>6</sup>	930 80 02	
	⊘ Clear			0.4 μm	2 × 10 <sup>6</sup>	930 04 12		
				1.0 μm	2 × 10 <sup>6</sup>	930 10 12		
				3.0 μm	0.6 × 10 <sup>6</sup>	930 30 12		
				5.0 μm	0.6 × 10 <sup>6</sup>	930 50 12		
				8.0 μm	0.1 × 10 <sup>6</sup>	930 80 12		
12-Well Insert PET		12 pcs.	1.1 cm <sup>2</sup>	○ Translucent	0.4 μm	100 × 10 <sup>6</sup>	931 04 02	48 pcs.
					1.0 μm	2 × 10 <sup>6</sup>	931 10 02	
					3.0 μm	2 × 10 <sup>6</sup>	931 30 02	
					5.0 μm	0.6 × 10 <sup>6</sup>	931 50 02	
					8.0 μm	0.2 × 10 <sup>6</sup>	931 80 02	
	⊘ Clear			0.4 μm	2 × 10 <sup>6</sup>	931 04 12		
				1.0 μm	2 × 10 <sup>6</sup>	931 10 12		
				3.0 μm	0.6 × 10 <sup>6</sup>	931 30 12		
				5.0 μm	0.6 × 10 <sup>6</sup>	931 50 12		
				8.0 μm	0.1 × 10 <sup>6</sup>	931 80 12		
24-Well Insert PET		24 pcs.	0.3 cm <sup>2</sup>	○ Translucent	0.4 μm	100 × 10 <sup>6</sup>	932 04 02	48 pcs.
					1.0 μm	2 × 10 <sup>6</sup>	932 10 02	
					3.0 μm	2 × 10 <sup>6</sup>	932 30 02	
					5.0 μm	0.6 × 10 <sup>6</sup>	932 50 02	
					8.0 μm	0.2 × 10 <sup>6</sup>	932 80 02	
	⊘ Clear			0.4 μm	2 × 10 <sup>6</sup>	932 04 12		
				1.0 μm	2 × 10 <sup>6</sup>	932 10 12		
				3.0 μm	0.6 × 10 <sup>6</sup>	932 30 12		
				5.0 μm	0.6 × 10 <sup>6</sup>	932 50 12		
				8.0 μm	0.1 × 10 <sup>6</sup>	932 80 12		

© SABEU GmbH & Co. KG | 1222-0003-001-03-2109-2

**MK MOBT KOREA**  
materials of bio technology  
모비트코리아

T : 031-916-8747  
F : 031-916-8748  
E-Mail: info@mobtkorea.com